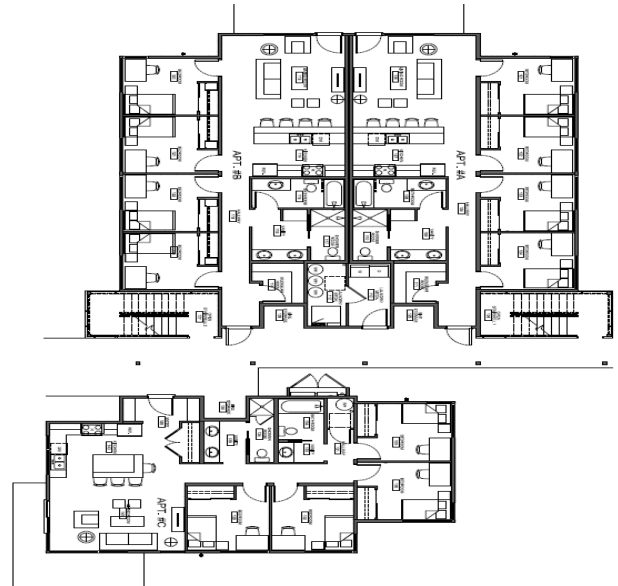




JACKSON HOLE®

Powderhorn Seasonal Employee Housing Development

Helping to fill the employee housing gap



Building A – 605 Powderhorn Lane **Building B** – 655 Powderhorn Lane **Building C** – 685 Powderhorn Lane
Jackson, WY 83001

The floor plan is a four bed room, lock off design. Each unit is comprised of a standard living/dining area, kitchen, 2 full bathrooms with each tenant having their own 110 square foot bedroom and closet which lock off from the rest of the unit. There is ample storage for bikes and skis and a coin-operated laundry facility on each floor.

Units are fully furnished for occupancy with the exception of bed linens, towels and kitchen utensils. Powderhorn is managed by Jackson Hole Resort Lodging – the valley's largest property management company.

The site is a short walk to bus stops, bike paths, grocery stores, restaurants, retail shopping, movie theatres, barber shops, post office and coffee shops.



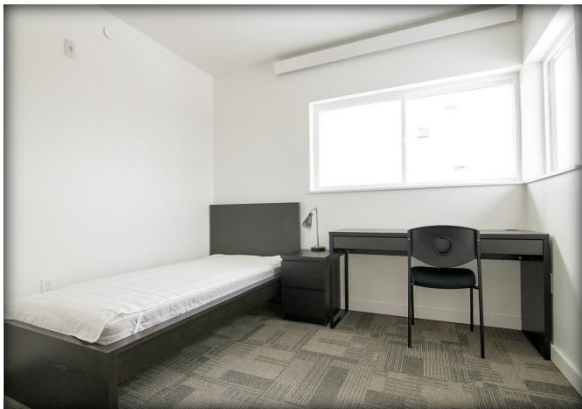
Views of Rendezvous Mountain to the NW



Living Room



Kitchen with stove, microwave, refrigerator and dishwasher



Lock-off bedroom with twin bed and desk



Bathroom



Views of Josie's Ridge to the South

General info and policies:

- Rent - **\$630**/month (includes furnishings, electric, cable, internet and trash)
- Deposit - **\$800** due prior to move-in. This is held as a non-refundable deposit to secure a bedroom. Once check-in is complete and the lease is signed the deposit will convert to a refundable security/damage deposit (less any cleaning or damage charges) after check-out.
- No smoking & no pets.
- Must be employed by JHMR full-time (30+ hours per week, 4 days a week) and in good standing.
- Employee(s) will be allowed to live there for a maximum of 2 consecutive seasons.
- Roommate issues will be handled on a case-by-case basis. If any situation escalates to a “boiling point” then a caring referral to our Employee Assistance Program will be made.

Process to obtain employee housing:

1. Apply for full-time job with JHMR @ <http://www.jacksonhole.com/employment.html>
2. Inform hiring manager about your need for housing.
3. If job offer is made and accepted then a housing application may be completed.
4. If you are chosen for a spot then housing coordinator will contact you.
5. Pay \$800 deposit to secure bedroom – collected by HR.
6. Pay \$630 rent (pro-rated depending on move-in date) – collected by HR.
7. Sign lease agreement – collected by HR.
8. Set up a move-in appointment with HR.